

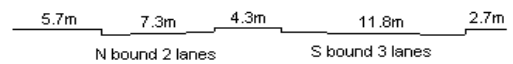
YEAR 2016

CORE STATION 1009

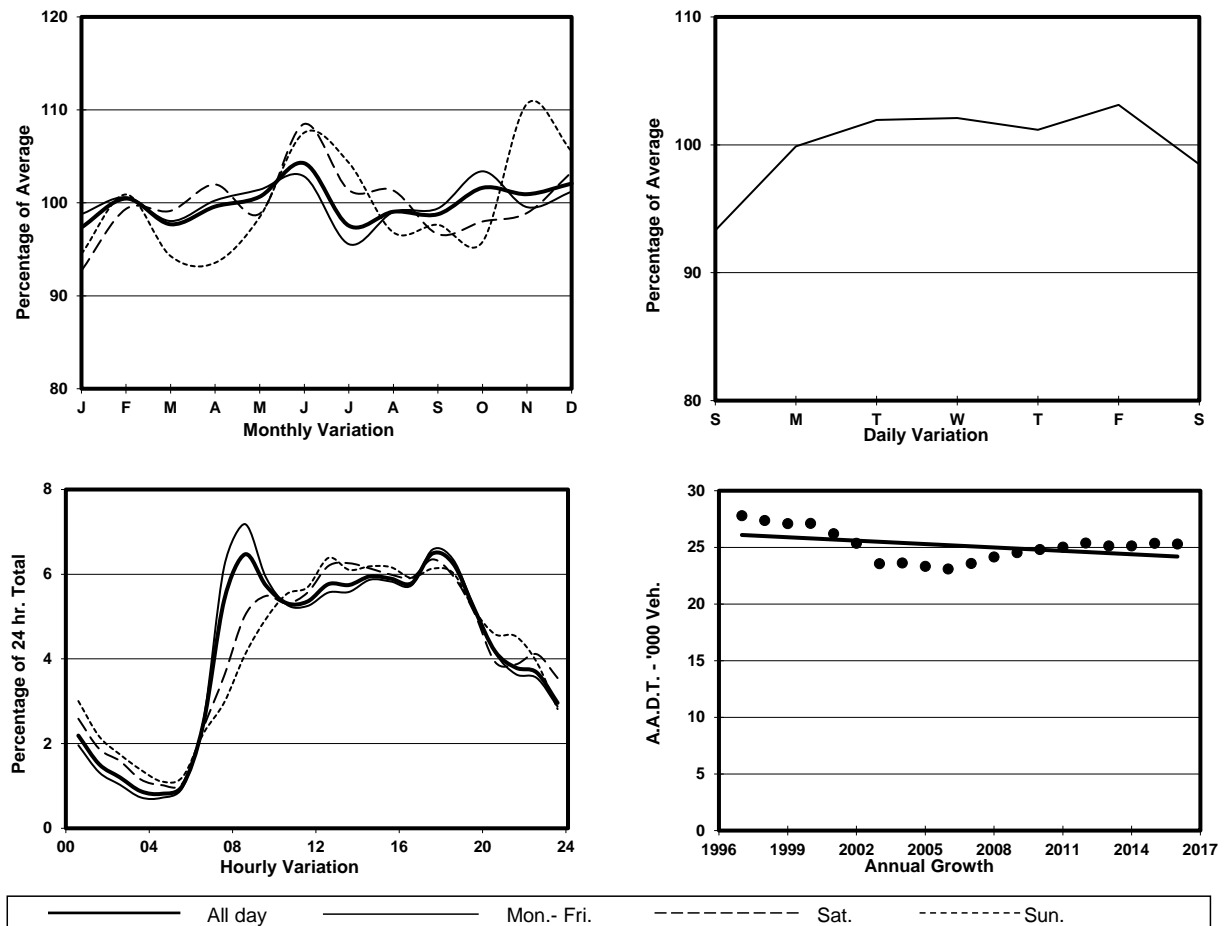
ROAD NETWORK MAJOR

ROAD TYPE PRIMARY DISTRIBUTOR

LINK CHAI WAN RD (from ISLAND EASTERN CORRIDOR APPROACH to TAI TAM RD)



1. TRAFFIC FLOW VARIATION AND GROWTH



2. TRAFFIC CHARACTERISTICS (BY DIRECTION)

Parameter	All - Day	Mon. - Fri.	Sat.	Sun.
SOUTH BOUND				
A.A.D.T.	12660	12910	12450	11910
R 12 / 24 - %	67.9	69	65.6	64.2
R 16 / 24 - %	85.8	86.9	83.2	82.9
AM Peak Hour	0800-0900	0800-0900	0900-1000	0900-1000
One-way flow at AM peak hour	810	910	690	550
T - % (AM)	-	10.3	-	-
PM Peak Hour	1800-1900	1800-1900	1700-1800	1700-1800
One-way flow at PM peak hour	710	740	730	670
T - % (PM)	-	10.9	-	-
Prop.of commercial vehicles - 16 hr.	-	13.1	-	-
NORTH BOUND				
A.A.D.T.	12620	12900	12560	11700
R 12 / 24 - %	72.4	73.6	70	68.2
R 16 / 24 - %	88.1	88.9	86.4	85.8
AM Peak Hour	0800-0900	0800-0900	0900-1000	0900-1000
One-way flow at AM peak hour	820	940	690	620
T - % (AM)	-	13	-	-
PM Peak Hour	1700-1800	1700-1800	1700-1800	1800-1900
One-way flow at PM peak hour	980	1050	860	810
T - % (PM)	-	12.4	-	-
Prop.of commercial vehicles - 16 hr.	-	11.9	-	-

3. OTHER INFORMATION AND COMMENT

4. Vehicle classification and occupancy - Monday to Friday

Time		Class of vehicle									
		Motor	Private	Taxi	Private	PLB	Goods veh.		Non	Fr. Bus	
		Cycle	Car		LB		Light	M & H	Fr. Bus	SD	DD
0700-0800	Pro	4.1	34.6	21.2	1.4	8.9	12.0	0.3	6.2	0.3	11.0
	Ocp	1.0	1.2	2.0	12.3	8.4	1.7	1.0	25.8	34.5	48.6
0800-0900	Pro	1.5	53.0	19.7	1.7	7.3	5.1	1.5	3.4	0.1	6.7
	Ocp	1.0	1.2	2.0	1.9	13.6	1.8	1.6	11.1	33.0	45.3
0900-1000	Pro	2.5	41.7	21.6	2.5	9.0	9.3	1.1	3.3	0.2	8.9
	Ocp	1.2	1.2	2.2	2.1	10.8	1.7	1.3	31.5	33.3	26.8
1000-1100	Pro	1.9	37.4	20.8	1.9	11.7	12.1	1.1	1.5	0.1	11.6
	Ocp	1.0	1.4	2.0	2.2	9.7	1.5	1.3	1.5	15.0	21.6
1100-1200	Pro	1.5	35.3	24.0	4.3	6.5	16.3	0.6	3.4	0.2	8.0
	Ocp	1.0	1.4	1.9	2.5	9.6	1.3	3.0	10.5	21.0	26.0
1200-1300	Pro	1.9	37.3	26.2	3.4	9.0	9.3	0.6	2.5	0.1	9.8
	Ocp	1.3	1.5	1.8	3.7	9.6	1.6	1.0	13.9	3.0	21.8
1300-1400	Pro	1.3	33.8	27.9	2.5	10.3	11.0	1.3	3.1	0.2	8.8
	Ocp	1.0	1.3	2.2	1.9	9.9	1.4	1.3	10.7	16.5	23.3
1400-1500	Pro	2.3	30.0	29.4	3.5	10.0	11.0	1.0	3.9	0.0	9.0
	Ocp	1.0	1.5	2.1	3.4	8.9	1.5	2.0	9.7	0.0	21.6
1500-1600	Pro	0.6	45.1	22.7	3.9	8.7	9.6	0.0	2.1	0.2	7.2
	Ocp	1.0	1.3	1.9	2.2	9.3	1.4	0.0	17.0	22.5	31.0
1600-1700	Pro	1.4	38.0	21.8	3.3	9.4	13.2	0.8	5.0	0.1	7.0
	Ocp	1.0	1.3	2.0	5.0	11.3	1.5	1.0	24.1	47.0	33.9
1700-1800	Pro	1.5	50.9	18.9	0.6	8.7	6.1	1.5	3.2	0.3	8.3
	Ocp	1.0	1.3	2.1	1.5	9.2	1.4	2.4	9.5	23.3	41.5
1800-1900	Pro	3.6	48.8	24.0	0.3	8.3	4.6	0.0	2.3	0.1	7.9
	Ocp	1.1	1.3	2.1	8.0	14.4	1.6	0.0	11.2	34.5	43.7
1900-2000	Pro	2.5	48.1	25.5	1.6	8.7	4.3	0.0	1.2	0.2	7.9
	Ocp	1.1	1.4	2.2	3.0	9.6	1.6	0.0	3.8	15.0	32.4
2000-2100	Pro	1.2	41.5	29.7	2.0	8.9	4.5	0.4	0.0	0.2	11.6
	Ocp	1.0	1.2	2.1	1.6	6.8	1.6	2.0	0.0	19.5	29.5
2100-2200	Pro	2.2	38.9	35.0	0.0	8.2	4.3	0.0	0.0	0.0	11.4
	Ocp	1.0	1.2	1.7	0.0	3.7	1.7	0.0	0.0	0.0	26.9
2200-2300	Pro	1.8	34.7	36.9	0.0	7.3	5.0	0.0	1.4	0.0	12.9
	Ocp	1.0	1.3	2.1	0.0	8.1	2.2	0.0	50.0	0.0	26.9
16 hours	Pro	2.0	41.3	24.6	2.1	8.8	8.6	0.7	2.8	0.1	9.0
	Ocp	1.1	1.3	2.0	3.2	9.9	1.6	1.6	16.8	25.7	31.5

Legend

Pro. Proportion of vehicles in % (Sum may not add up to 100% due to figure rounding)*

Ocp. Average occupancy of vehicles including both driver and passengers*

M&H Medium and Heavy

* All traffic data are collected from combined bounds except for one way traffic